



**GREAT CANADIAN
HELI-SKIING**

GUEST HANDBOOK



Photo: GCH guide Sue Gould.

The Leaders in Boutique Heli-Skiing
Small Groups | Unlimited Vertical | Golden, BC



GREAT CANADIAN HELI-SKIING








Photo: Jordan Manley.

"We have never strived to be the biggest, just the best."

- Greg Porter, Proprietor



What's Inside

WELCOME!	3	The Leaders in Boutique, Small Group Heli-Skiing	
THE MOST COMPLETE HELI-SKIING PACKAGE	5	Including Unlimited Vertical	
TRAVEL ARRANGEMENTS	7	Clearing Customs, Saturday Shuttle, Driving Directions	
DAILY ITINERARY	9	Arrival, Typical Day, Checkout	
SKIING AND SNOWBOARDING	10	Ability, Grouping, Heli-Boarding Tips	
OUR TERRAIN, SNOW AND CLIMATE	11	Terrain Map	
THE STATISTICS	13	Snowfall, Run Lengths	
SAFETY: OUR PRIMARY CONCERN	14	Guides, Helicopters and Pilots	
HEATHER MOUNTAIN LODGE	15	Your Home Away From Home	
OUR FLEXIBLE PACKAGES	17	Short, Long, Semi-Private and Private Trips	
LODGE AMENITIES	18	Communications	
POWDER PRIVILEGES	20	GCH Loyalty Program	
REGISTRATION, DEPOSITS AND REFUNDS	21	Payment Information	
CANCELLATIONS AND INSURANCE	22	Our Policy, Protection Plans	
FREQUENTLY ASKED QUESTIONS	23	Details, Details	
SUGGESTED PACKING LIST	25	Waiver	



Welcome!

Unlimited Vertical, Small Groups, Time Sensitive Trips, Easy Access, Not To Mention World Famous Powder!

Thank you for making Great Canadian Heli-Skiing your heli-skiing operation of choice. You have made the best ski decision of your life!

You will experience the **Best In Heli-Skiing: *Small Groups*** of just 4 people, ***Unlimited Vertical*** (meaning no extra charges), an amazing ***Location*** in the powder epicentre of Canada and closest destination operation to an international airport, a ***98% Fly Day*** record and ***Flexible, Time Sensitive Packages***. From the beginning of your trip to the end, you will ski endless expanses of untracked powder, dine on high mountain cuisine and enjoy the stories and camaraderie of your fellow powderhounds and guides.

The base of our operations, Heather Mountain Lodge, is located in the wilds of the **Purcell and Selkirk Mountains** and is only a **4 hour drive** from **Calgary International Airport**. High tech communications enable you to slip in and out of the real world so you can enjoy the remoteness of the lodge. You may choose a quick two-day getaway, or a self-indulgent week. The choice is yours: we can accommodate any package length or start date!

Relax with our all-inclusive price and experience small group service of just four guests per guide. Meet new friends, or join as your own group with family and friends, either way, you are guaranteed an experience of enduring value.

Welcome to Great Canadian Heli-Skiing! We look forward to skiing with you.

The Leaders In Boutique, Small Group Heli-Skiing

All-inclusive trips featuring:

THE SMALLEST GROUPS IN THE BUSINESS: 4 guests plus guide | Flexible holidays: 2 to 7 day trips plus combination packages with resort and cat-skiing available! | Located in the world's most famous powder skiing belt | Closest heli-skiing lodge from an international airport | Fully connected accommodation: Phone, Wireless Internet and LCD television | UNLIMITED VERTICAL ALL SEASON

Photo: Jordan Manley.



“Terrific operation. Very professional. Focused on safety and fun. Guides are excellent. We’ll be back.” - John



**SMALL
GROUPS**



**UNLIMITED
VERTICAL**



**LOCATION,
LOCATION**



**FLY
DAYS**



**FLEXIBLE
PACKAGES**



The Most Complete Heli-Skiing Package

WHAT'S INCLUDED IN YOUR TRIP:

- **Unlimited Vertical of mind blowing heli-skiing! This means you will not incur extra vertical charges.**
- **Double accommodations (2 Queen beds) at Heather Mountain Lodge with mountain views.**
- **Free use of powder skis, poles, snowboards, and transceiver.**
- **Gourmet dinner and breakfast in the lodge and picnic lunches in the terrain.**
- **Maximum of 4 heli-skiers per group—the best in the industry.**
- **Maximum of 3 groups serviced per A-Star helicopter.**
- **Maximum of 24 guests at Heather Mountain Lodge at one time.**



What's Not Included: With Unlimited Vertical you will certainly not have to pay any extra for skiing. A typical end of trip bill will include; liquor, retail, massage, gratuities and hopefully your deposit for next year.

What is Unlimited Vertical? All heli-skiing operations will guarantee a certain amount of vertical feet/metres, though not everyone offers the same amount. At Great Canadian, we offer a generous amount of vertical (e.g. 30,500 m/100,000 ft for a weeklong trip).

You may have previously skied at an operation where once you reached the guaranteed amount of vertical, they started to charge you again to ski more than the guaranteed amount (around \$100 for every 1,000 vertical metres skied)! At the end of your stay you were left with a substantial bill to pay, on top of what you had already paid.

At Great Canadian Heli-Skiing, once you have reached the guaranteed amount... just keep skiing... we will not charge you for skiing extra vertical! We pioneered this industry changing concept and called it "Unlimited Vertical". Our most recent statistics showed us that the **average** skier on a weeklong trip skied 43,000 vertical metres (141,000 feet), so taking into account how much extra vertical charges would add up, this is a **huge** savings. Don't forget that was what the **average** skier totalled...image the savings if you are a strong skier!

Does Unlimited Vertical mean you can ski the whole day non-stop? Well, not quite! We run a very similar length of day to a ski resort. Depending on the time of year, our 'guest day' runs from 9:00 am to 3:30 -4:30 pm (see Daily Itinerary). This allows for a fulfilling day of skiing for our guests while allowing for our guides day to start at 7:00 am and run to 6:00 pm with pre and post meetings to plan for your enjoyment and safety. On

Photo: Jordan Manley.

“We are still stunned by the feel and images of fresh powder. I very much liked the small and intimate groups at GCH. It would not be the same trip with 11 or so gung-ho skiers tearing up the slopes next to me!” - Lisa, California





Travel Arrangements

average, guests that are on a 6 day package will **average** 7,167 metres (23,500 feet) a day and those on a 3 day package will average 5,875 metres (19,275 feet). Strong skiers/riders on a good day can do over 10,000 metres (33,000 feet) in 1 day!

Ski and Snowboard Equipment: Our guiding team has selected skis and snowboards that are specifically designed to perform in powder. Even if you have had very little powder experience, the major advances in technology will have you ripping the pow in no time! We carry the following skis; Armada JJs, Rossignol S7 Barras and Voodoo BC110s , Atomic Heli Daddy and K2 Pontoons. For snowboarders, we carry the Burton Fish, Malolo, and Supermodel. Other pieces of equipment included in your package are: poles, snowboard bindings, transceivers and rescue equipment. Please bring your own boots.

Located halfway between Golden and Revelstoke. How to get here...

If you have limited time off you'll be glad to know Great Canadian Heli-Skiing is the most accessible Canadian destination heliskiing operation from an international airport! Located between Golden and Revelstoke British Columbia, just off of the Trans Canada Highway, our lodge is a straight-forward 4 hour drive from Calgary International Airport right to the front door.

Clearing Customs: We strongly recommend that all international guests check with Canadian Border Services Agency (www.cbsa.gc.ca) to ensure that travel documentation is up-to-date and that you will have no surprises, which would inhibit your entry into Canada. All travelers including US citizens must carry a valid passport to enter the country.

Canada Customs has been reviewing minor misdemeanours, so it has been suggested that anyone traveling internationally go through the steps to have their record cleared.

Saturday Shuttle: Those joining us for a 6-day package that commences on a **Saturday** may choose to let us do the driving. The Calgary Delta Airport Hotel lounge is the starting point for your adventure. It is located just outside the airport doors. **Please check-in by 1:30pm as departure time is 2:00 pm** and "latest time to wait" is 3:00pm. If everyone is onboard before 2:00pm, the shuttle will depart earlier. For those arriving the night before and staying at the Calgary Delta Airport Hotel, our escort will meet you on Saturday at 1:30pm in the Delta lounge. The Great Canadian Heli Skiing ("GCH") Private coach will depart no later than 3:00pm. It will be a 4 hour drive through beautiful Banff National Park, Lake Louise and Golden.

We recommend that overseas travelers arrive Friday evening to avoid jet lag. When booking your return flight, keep in mind that the shuttle will return you to Calgary the following Saturday by 12:30 pm. Please do not book your departing flight for any earlier than 1:30 pm.

Staying in Calgary: We recommend that guests stay at the Delta Calgary Airport Hotel (ph: 403.291.2600). Ask for 'Great Canadian Heli-Skiing' rates when making a reservation in order to secure our corporate rate (ask for code "GKH").

Self-Drive: Heather Mountain Lodge is the most accessible heli-skiing lodge by car. Most of our guests choose to drive themselves by rental car and enjoy the magnificent scenery from Calgary. It is a 4 hour drive on the Trans Canada Highway. You will pass through beautiful Banff, Lake Louise and Golden with plenty of opportunities for pre and post-resort skiing. **GPS:** 51.479191, -117.481184

If you would like the flexibility of renting a car, please feel free to use our discount code with Budget Rent A Car (www.budget.com). When filling in your details, add our "BCD Number": U175757.

Check-in time is 6 pm and dinner is served at 7 pm, so book your flights accordingly.



Follow this sign!

Driving Directions to Heather Mountain Lodge: From the Calgary International Airport, head south on "Barlow Trail" to the Trans Canada Highway (#1 HWY-16th Avenue). Head West on the #1 out of Calgary. You will pass through Canmore, Banff and Lake Louise. Just before reaching Golden you will travel through 15 km of the Kicking Horse Canyon. Use caution in this area.

Once you reach Golden, **Heather Mountain Lodge (GPS Coordinates:** 51.479191, -117.481184) is 55 km (34 miles) or 45 minutes further west, remaining on Highway 1. You will find the Lodge on the right (north) side of the highway and marked by a lighted sign at the turn and a few small signs noting 'Great Canadian Heli-Skiing' and 'Heather Mountain Lodge' prior. Once you turn off the highway, the Lodge is to your left and 100 m up the road. The entire trip should take approximately 3.5 to 4 hours.

**Please note that dinner is served at 7:00 pm daily so please try to arrive by 6:00 pm for check-in.*

Enjoy your trip and drive carefully. If you have any problems, the phone number at Heather Mountain Lodge is 1-250-344-7490.

Private Car/Shuttle: Alternatively, you may choose to hire a car and driver. We recommend "Banff Transportation & Tours". Please contact them for rates and availability on: +1.403.762.8400 or dawn@banfftransportation.com.

Private Planes: We have had guests that want to fly their planes right into Golden. If you that is an option you are interested in, please call the Golden Airport on 250.344.2534.



Daily Itinerary

Are You Excited? Here's How Your Day Will Roll Out!

Arrival Day: Room check-in at Heather Mountain Lodge is 6:00 pm. If you arrive earlier, make yourself at home, enjoy a drink in the lounge or take a tour of our property. After you are unpacked and settled in, join us in the lodge with your boots, so the guides can get your skis set-up after dinner.

We welcome you to the dining room at 7:00 pm for dinner and introductions. After dinner guides will escort you to the Ski Room located in the lower level of the lodge to choose equipment, weigh in and complete some administration. Afterward enjoy entertainment in the lounge.

Typical Day:

6:30 - 7:30 am - The guides rise early to go over snow conditions and make decisions on where you will be skiing that day. The Canadian Helicopter flight personnel prepare and inspect the helicopter.

8:00 am - Breakfast. We offer a wide selection of nutritious choices to start your day - everything you need to hit the powder. Please bring your reading glasses on your first morning, as Release of Liability Waivers will be signed at this time.

9:00 am - 10:45 am - (First day only) - On your first ski day everyone will participate in the heli-briefing and companion search training. Light snacks will be served in the Ski Room before you head out. Everyone must attend.

9:00 am - First group lifts off from the on-site heli-pads at the lodge.

12:30 - Lunch out in the field with hot soup and tea to accompany your picnic lunch prepared by our HML chefs.

3:30 - 4:30 pm - Final turns and arrival at the lodge. Note: December and early January's last run come in a bit sooner due to earlier dusk.

4:30 - 6:00 pm - Guides/pilots meeting - discussion on the days skiing and plans for tomorrow.

4:30 pm - Après ski snack and cold drinks are served in the Ski Room.

5:00 - 7:00 pm - Free time, massage, relaxation.

7:00 pm - Dinner - the other highlight of the day!

Check Out Day: Saturday Week Long Guests - Breakfast will be at 7:00 am for those departing at 8:00 am on our Saturday shuttle to Calgary. Check out and settling bills occurs between 7:00 - 8:00 am.

2, 3, 4 & 5 Day Guests: Guests who are departing after skiing on their final day, please ensure that you have all your things packed and set aside near the door of your room so that housekeeping can prepare for those guests arriving. We kindly ask that all guests are checked out of their rooms between 4:30 - 5:00 pm at the latest.



Skiing and Snowboarding

Ability: In order to fully enjoy your heli-skiing holiday you must be a strong intermediate skier/snowboarder. This means you have skied/snowboarded regularly over the last several years and are capable of controlling yourself on treed ski runs, traverse slopes and can manoeuvre over variable mountain conditions. For example, at your local ski resort, if you are able to descend a black diamond run and maintain control you will likely be prepared for our terrain. Any experience that you have had in skiing powder would be an additional asset. We suggest regular skiing/snowboarding and fitness conditioning before your heli-ski vacation. You may even want to consider our Combo Packages: these packages incorporate a few days of skiing at Kicking Horse Mountain Resort where you can get your “ski legs” back.

Grouping: We ski with four guests per group. Because of this awesome ratio, we try to accommodate our guests as much as possible, by allowing them to group themselves. During your vacation we encourage our guests to ski with others who have similar interests or abilities. As a result of using small groups, compatibility is most often attainable. Note: For safety and efficiency, the Lead Guide will always choose the order in which each group departs. The Lead Group will work harder during the day by helping the Lead Guide with trail breaking and preparing landing/pick-up spots.

Heli-pad and Staging Area: The Heli-pad is located 50 steps from the lodge doors. There is no drive to get to the helicopter in the morning, just walk out the back door! Our lodge is right in our tenure, so no long heli flights just to start skiing! In the Ski Room you will find storage compartments, boot and glove dryer, washrooms and a changing area.

Here are some Heli-Skiing & Boarding tips to help make the most of your trip:

- **Relax! On your first day you may feel overwhelmed, this is totally natural. Pace yourself ...racking up vertical is not a competition! Ask your guide for technique tips.**
- **Watch the guide. When your guide stops, scope out a spot close-by behind (i.e. uphill) from him/her on a bit of a mound or downhill slope, so that when you get going, you will already have momentum.**
- **Having trouble getting speed? Start off in another skier's track and once you have enough speed, veer off!**
- **SNOWBOARDERS - Let a skier go first (you'll still get fresh tracks) and watch him/her and your guide to see how the terrain changes and work out where you might need more speed.**



Our Terrain, Snow and Climate

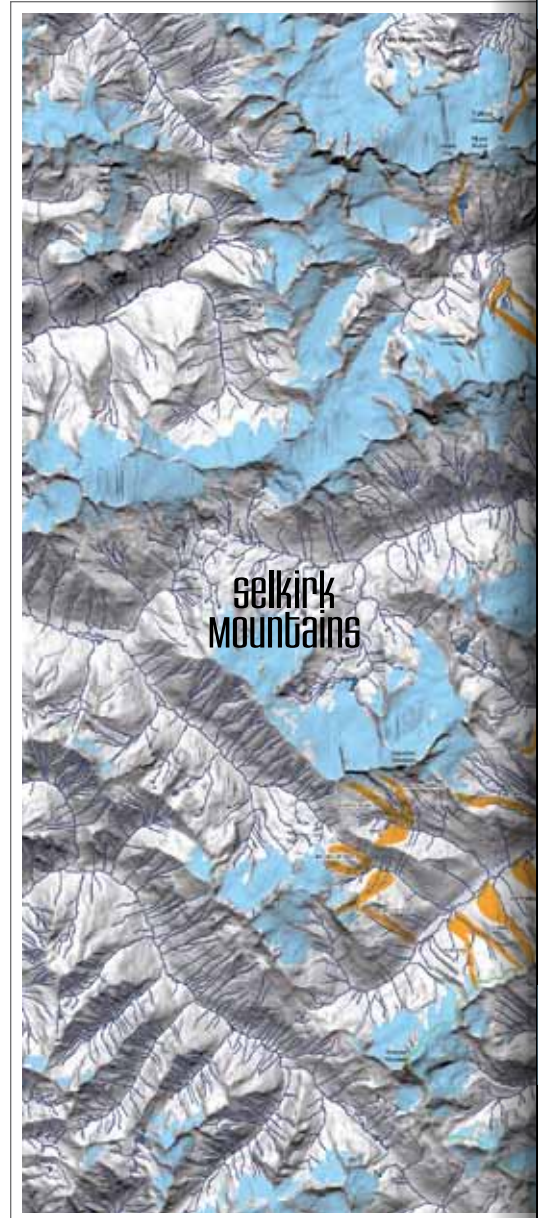
■ ski runs ■ glaciers

Our Ski Area: The interior ranges of British Columbia – the Selkirk (Rogers Pass) and Purcell Mountains – are world renowned for being the epicentre and birthplace of heli-skiing. They can offer phenomenal amounts of light, dry powder snow, good flying conditions, tens of thousands of square kilometres of wilderness and ideal skiing weather. Great Canadian Heli-Skiing has an exclusive license to vast terrain in both the Selkirk and Purcell mountain ranges, along the north and east borders of Glacier National Park and just west of the Canadian Rocky Mountains.

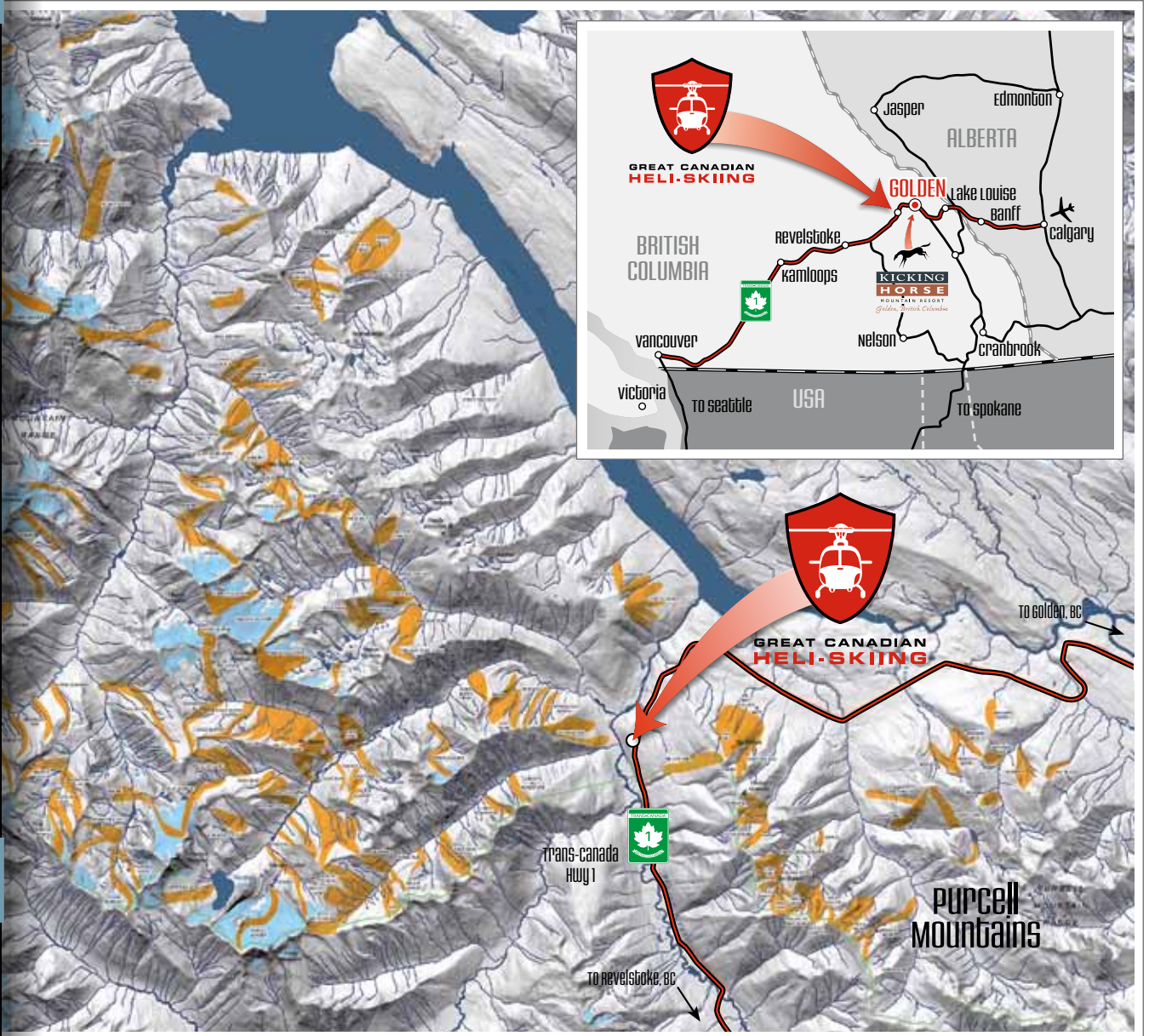
Terrain: There are hundreds of ski runs to ski, offering every type of terrain – glaciers, open bowls, gladed trees – and every slope angle and exposure. Great Canadian stands out in the industry because of the quality and the accessibility of our terrain above our base at Heather Mountain Lodge. This accounts for minimal days a year when we are unable to ski due to adverse flying conditions. The length of our runs vary from interesting, playful 500 metre (1,640 feet) shots to long cruising glacier runs of 1,800 metres (5,905 feet) and everything in between. Usually, we ski at an altitude between 3,000 and 1,833 metres (9,000 and 5,500 feet).

Temperatures: Winter temperatures, on average, range between -7° to -15°C (20° to 5°F). Occasionally temperatures can fall below these ranges producing very cold weather -30°C (-18°F).

Snow Conditions: Our average annual snowfall is over 14 metres (46 feet) and will typically build a base of more than 3.5 metres (12 feet)! The Selkirks and Purcells are renowned for the deep, dry consistent snow packs that are ideal for heli-skiing. However, skiing conditions and stability in the mountains can deteriorate with excessive exposure to wind, sun, snow or possibly rain. While nature will dictate the conditions, our guides will focus on finding the best skiing available.



Ski in both the Selkirk and Purcell Mountains!





The Statistics

Location: We are the most accessible Canadian destination heliskiing operation from an international airport, located between Golden and Revelstoke BC, just off of the Trans Canada Highway (**GPS:** 51.479191, -117.481184). From Calgary International Airport, it is a 4 hour drive to the lodge/heli-plex.

Ski Area: Our vast tenure is equivalent in size to 14 Whistler-Blackcombs. Or on a European scale, bigger than the Portes du Soleil ski domain!

Mountain Ranges: We are fortunate enough to have terrain in both the Selkirk and Purcell Mountains, right on the border of the Rocky Mountains.

Grouping: Small groups of 4 people, with a max of 3 groups operating from 1 helicopter. Only 24 guests at any time in the lodge and terrain.

Vertical Skied: Guests that are on a 6 day package usually **average** 6,650 metres (21,817 feet) a day and those on a 3 day package usually average 5,875 metres (19,275 feet). Strong skiers/riders on a good day can do over 10,000 metres (33,000 feet) in 1 day!

Best Time to Come: This depends on what type of skiing you prefer;

- December, January, early February – Lots of powder, amazing glades, steeper terrain
- Mid February to early March – Mixture of alpine bowls, glades and powder
- Mid March and April – Alpine bowls, sunshine and occasional dumps of snow

Snowbase: Usually over 3.5 metres (12 feet).

Elevations:

- Heather Mountain Lodge: 1,030 metres (3,379 feet)
- Highest peak in tenure: 3,251 metres (10,666 feet)
- Highest drop-off: 2,970 metres (9,744 feet)
- Lowest elevation: 834 metres (2,736 feet)

Fly Days: 98% of the season are Fly Days. On average we experience less than 2 Down Days a season.

Lifts: 2 A-Star B2 helicopters, the best in the business.

Runs: +150 named runs.

Average Run Length: 750 metres.

Longest Run: "Cornice Glacier" is 1,800 metres (5,905 feet)!

Average Snowfall: 14 metres (550 inches or 46 feet).

Closest Ski Resorts from Heather Mountain Lodge:

- Kicking Horse Mountain Resort (60 minutes)
- Revelstoke Mountain Resort (70 minutes)
- Lake Louise Ski Resort (100 minutes)
- Banff / Sunshine Village (2 hours 15 minutes)



Safety: Our Primary Concern



Guides: We hold your safety as our #1 priority. Our guides are experienced and certified professionals (Association of Canadian Mountain Guides, Canadian Ski Guide Association and International Federation of Mountain Guides Associations).

They are all trained in snow safety, weather analysis, and emergency medical techniques and mechanized ski guiding. You know you are in safe hands since all of our guides have, at the very least, +10 years of experience out in the field with many teaching snow safety courses. Day by day they will find the best of what Mother Nature has to offer. To read our guides and pilots bios, see our website.

Helicopters and Pilots: We use the ultimate heli-skiing machine, the A-Star B2. These are powerful, very comfortable helicopters, ideal for mountain flying. All of our helicopters' onsite engineers, and our high hour, mountain-trained pilots are supplied by Canadian Helicopters, the largest helicopter company in Canada. Canadian Helicopters has the extensive infrastructure to ensure the rigorous maintenance schedule and safety inspections required for helicopters.

Snow and Avalanches: Our guides are constantly practicing snow and avalanche management as they analyze the changes in the conditions and make guiding decisions accordingly. Each morning and evening our guides meet to evaluate and discuss the weather, snow stability and terrain based on field observations and data supplied by remote weather stations and the Canadian Avalanche Association.

Emergencies: Continuous radio communication between the guides, the helicopter and our base is maintained. The guides carry extensive emergency gear in their packs and on the helicopter. It's also comforting to know that due to our location, the Golden hospital is only a short helicopter flight away.

HeliCat Canada & CWSAA: We are proud members of the Canada West Ski Areas Association (CWSAA) and HeliCat Canada, the industry regulatory body.



Photos: Grant Gunderson





Heather Mountain Lodge



**Your Home Away From Home
at 1030 m / 3380 ft.**

**GPS Coordinates:
51.479191, -117.481184**

The moment you set foot in Heather Mountain Lodge you'll realize you have arrived at a very special place.

The craftsmanship and design are clearly reminiscent of a bygone era. Beautiful, massive fir and larch beams are pinned together with oak and mahogany dowels and the exposed joinery techniques are a tribute to the timber-frame craft.

The large, vaulted ceiling dining room offers panoramic vistas of the rugged Selkirk Mountains while you enjoy the high mountain cuisine prepared by our excellent chefs.

The lodge and the hotel rooms are in two separate buildings, joined by a heated pathway. So you have the option of being social in the lounge or escaping to the quiet of your room.

Recently re-decorated guest rooms are sure to provide comfort, privacy and with wireless internet and satellite TV, you can keep up-to-date with news and events.

When it is time to go skiing we have the advantage of on-site heli-pads literally 50 steps from our Lodge. No shuttles are required, all of your heli-skiing happens directly to and from our lodge!



"The trip was unbelievable. Everything I expected and much more. The food, people and accommodations were outstanding and of course the skiing was breathtaking!!" - Tyson, New Jersey





Our Flexible Packages

Regular Packages: Did you choose a 2, 3, 4, 5 or 6 day trip? We are the best in the industry in creating a trip the way you want it. This can be for a short time sensitive trip of 2 or 3 days, or the full indulgence of 4, 5, 6 or more days. We have even created packages where you can add on resort or cat-skiing to the start or end of your heli-skiing holiday.

Combination Packages: We are fortunate to be located in the middle of British Columbia's powder producing epicentre... or as we like to say, 'epic-centre'! Because the region is blessed with so much snow, all types of ski operations have popped up. In order to experience what this amazing region has to offer, we have created several combination packages that will let you see why our winter wonderland is a Mecca for powder fiends.

If you would like to get your 'ski legs' back before going heli-skiing, or just want to ski the biggest vertical in the Canadian Rockies region (4,133 ft/1,260 m), make sure to check out Kicking Horse Mountain Resort. Haven't heard of it? Well, think of skiing Jackson Hole with Canadian prices. The terrain (including 80 in-bounds chutes) and the scenery are awesome!

Another operation that is a MUST for any keen skier is Chatter Creek Cat-skiing. What is 'cat-skiing'? It is like heli-skiing, but instead of using helicopters, they use 'snowcats'... i.e. snow grooming machines that are capable of carrying groups of 12 people in a comfortable cabin on the back of the cat. Chatter Creek's snow and terrain has become legendary, appearing in many ski and snowboard magazines and movies.

Semi-Private Packages: Eight friends, two groups and one helicopter. The math is easy; make the most of a networking opportunity, or just enjoy sharing time with friends. Coach transfers from the Calgary International Airport are included.

Private Packages: For the most discerning enthusiast, who values their time, and operates without compromise. Just yourself and three friends in your own helicopter. You choose the days you want to ski and you ski to YOUR own program. Private limousine transfers to/from Calgary International Airport are included, as well as a private room for each member of your group. Live More... Dream Less...

Non-Skiing Partners: Would you like to spend time with your partner who may not be a skier? They can still join you! Or, if you have a young child, both of you can take turns heli-skiing while the other looks after your child (or both of you can go: we will arrange a babysitter!). Contact us for more details.



Lodge Amenities

Massage Therapist: Aching muscles from a long day on the mountain? Massage services are available at a rate of \$75 per 45 min. Appointments MUST be booked 24 hours in advance. The Sign-Up sheet is at the Front Desk.

Hot Tub: Relax and enjoy an Après Ski hot tub. Towels are on site. Please DO NOT take glass into or near the hot tub area; plastic cups are available.

The Woolly Toque Lounge: Kick back and relax with your favourite cocktail in front of the fireplace. Watch satellite TV, play pool, or discuss your ski day with the rest of the crew. Please Note: As we are a Licensed Facility, please do not bring personal alcohol into the Lodge. We cannot open outside wine, beer, or liquor in our licensed area. Accordingly, we are not allowed any other liquor except that which we have purchased from the Golden Liquor Store. British Columbia is a controlled liquor province and therefore the Liquor Board can visit our premises and compare our purchases in Golden with anything that is on our premises. If we are caught with anything in our licensed area, we are subject to a fine or loss of license. This is not worth the risk. You may consume liquor that you have purchased in your room but not in the lodge.

The Store: Arc'teryx and Smith are just some of the quality brands of technical and outdoor clothing and gear that we carry in our store. Come browse our selection in the front lobby.

Communications: Heather Mountain Lodge utilizes the latest technology to provide the best communication services available. Every room has free wireless internet and a phone. We also have a computer for guest use in the lounge and fax service available from the Front Desk.

The Lodge has cellular phone coverage. If your phone is compatible (CDMA) with Canadian service providers Bell and Telus, your phone should work.

Lodge Expenses: We accept cash in Canadian and US dollars, traveler's cheques, Master Card, Visa and American Express. We do not accept personal cheques at the lodge. Optional expenses could include single room upgrade, ski shop purchases, liquor, massages and gratuities.

Gratuities: Please feel free to include a gratuity at the end of your ski trip if you feel that the staff service throughout your stay was exceptional. Simply indicate what amount you would like to leave for the guiding team or the lodge team. All staff will be aware of your contribution.

Smoking Policy: There are strict bylaws in British Columbia regarding smoking; therefore, while on the property at Heather Mountain Lodge we kindly ask that you only smoke in the designated areas. When skiing or at lunch please be sensitive to other guests by consulting with your guide as an appropriate time and place to smoke. Always smoke downwind of others and always have a small canister or bag in which to collect your extinguished cigarettes.

Photo: Jordan Manley.

"After skiing 11 weeks with various heli-skiing companies over the past ten years, I now ski exclusively with Great Canadian. Everything there is first class: Terrain, guides, weather, helicopter, food. Why would I go elsewhere?" - Jon, Washington





Powder Privileges Loyalty Program

At Great Canadian Heli-Skiing we simply love what we do - and we couldn't do it without you, our loyal guests! In 2005 we introduced a new customer appreciation program to honour returning guests. Depending upon how many accumulated skiing days the honourees have, they are presented with a very special gift, decorated with the exclusive **Powder Privileges** emblem.

We hope to welcome many more to this club over the years to come and always strive to provide our guests with an experience that will become the basis of a lasting relationship. We would like to extend our thanks to all of our guests, new and old friends alike.



**POWDER
PRIVILEGES**

Ski the following number of days and receive these custom-made gifts decorated with our exclusive Powder Privileges Program emblem:

- 10 days:** ARC'TERYX Thermal Pro Covert fleece pull-over
- 25 days:** ARC'TERYX Wind Pro Gamma AR soft-shell jacket
- 50 days:** ARC'TERYX Gore-Tex Theta AR shell jacket
- 100 days:** Custom-made powder skis and snowboards, hand-made in B.C. by Prior Skis and Snowboards.

We are proud to partner with these small Canadian companies, whose dedication to quality and detail have launched them into industry leaders.



ARC'TERYX



Photo: Jordan Manley.



Registration, Deposits and Refunds

Step 1: Using our brochures and/or website, select a tour and date that suits you.

Step 2: Be sure to read the Great Canadian Heli-Skiing Waiver before booking your package. This waiver will affect your legal rights. You will be required to sign a copy of this waiver before being allowed to ski/ride with us.

Step 3: Contact our office via: Phone: 1 250.344.2326 or 1 866.424.4354, Fax: 1 250.344.2316 or e-mail: info@canadianheli-skiing.com with any questions or with a booking request.

Initial Deposit: To secure your space, we require an initial deposit of \$750 for 2, 3, 4-day packages, \$1,500 for 5 and 6 day packages, or 15% for Privates and Semi-Privates. The deposit is refundable up to May 1st. After May 1st, all deposits become non-refundable. We accept Visa, MasterCard, American Express, Wire Transfers and Personal Cheque.

Final Deposit: Final balance of Deposit is due 14 weeks prior to your trip, or November 1st, whichever comes first. Any spot held will be subject to cancellation if the full deposit balance is not received by the final deposit date. If you are booking after November 1st, the final deposit will be necessary upon the booking date. We accept MasterCard, Visa, American Express, Personal Cheque or Wire Transfers. Deposits are considered payments upon your departure date. Any additional charges or refunds will be presented at this time. Deposits in US funds will be credited to your account at the exchange rate that we receive upon deposit at the bank. This rate is always subject to change.

Wire transfers details:

Great Canadian Heli-Skiing Ltd.

Canadian Imperial Bank of Commerce,
521, 9th Ave N, Golden, BC, Canada V0A 1H0
PO Box 175, Golden, BC, Canada V0A 1H0

Phone: 1.250.344.2244

Bank #: 010

Transit #: 00350

Account #: 40 11112

Swift Code: CIBCCATT

IBAN Routing #: 026009593

Be sure that transfer instructions include your name and trip date.

Vertical refunds:

Refunds are \$100 per 1,000 vertical metres not skied based on the following guarantees:

- **Private and 6 days - 30,500 vertical metres**
- **5 days - 22,000 vertical metres**
- **4 days - 17,500 vertical metres**
- **3 days - 13,000 vertical metres**
- **2 days - 8,800 vertical metres**

Refunds are given only for mechanical delays or inclement weather. Refunds will not be given for any unused part of a package due to physical and skiing abilities.



Cancellations and Insurance

Great Canadian Heli-Skiing strongly recommends Cancellation Insurance

Cancellations: We will refund all deposits made, less the non-refundable initial deposit; in Canadian Funds, for cancellations received in writing or by fax, 14 full weeks prior to the commencement date of your trip, or by November 1st, whichever comes first. If you are unable to make your holiday after the cancellation date, the package you purchased is non-refundable, however you may transfer to another person if you find a replacement.

Please note: the nature of our business requires that we make significant commitments of highly trained personnel and very expensive equipment well in advance of you skiing with us. We do this to ensure you have the best holiday possible when you arrive. As such, we cannot refund in full or any unused portion of a trip, to customers who find they must cancel after the final deposit date.

Insurance: For your peace of mind, and to avoid any financial hardship an unexpected cancellation could cause, **Uniglobe Specialty Travel** has arranged for travel insurance coverage especially for your holiday package with Great Canadian Heli-Skiing. To book your insurance, or to find out more information, please contact: Robin or Wanetta, Uniglobe Specialty Travel Ltd.

Phone: 1.866.667.0811 or 250.837.2544. Email: revelstoke@uniglobespecialty.com



Photo: Jordan Manley.



Frequently Asked Questions

What do I need to pack? We strongly recommend that you bring your well-fitting ski boots as carry-on during your flight. For skiing it's all about layers. A Gore-Tex non-insulated shell plus several synthetic shirts and pants with varying thickness will allow you to adapt. You will not need to dress as warmly as you do when you resort ski as being in the heli is a lot warmer than being on a chairlift for 10-15 minutes. Remember — no cotton, it gets wet and stays cold. There is no need to bring an extensive wardrobe, as the lodge is very casual.

What type of skis and snowboards does GCH provide? We supply the skis and poles, you just need to bring your boots! Our main fleet ski is the Armada JJ. Other skis available are the K2 Pontoons, Atomic Heli-Daddy and Snoop Daddies. All the skis were designed with powder skiing in mind. For snowboarders, we carry Burton Snowboards and have several Fish, Malolo and Supermodel decks for your shredding pleasure. We also supply you with transceivers and rescue equipment.

What about boots? You need to bring your own boots. Comfort and a smooth forward flex are the most important attributes. New boots are most often not comfortable. Tight racing boots are miserable. What you should look for is a boot that does not have abnormal pressure in the toes, ankle or lower part of the calf. Please remember that we supply skis and poles but we do not supply boots; so take your boots on the plane as carry on luggage!

How about helmets? Some guests wear helmets and we would encourage you to do so, but they are not mandatory. Helmets that offer a low profile or $\frac{3}{4}$ coverage shell and a removable neoprene ear cover

are the way to go for heli-skiing, as the ear covers can be removed easily depending on the temperature. Helmets that fully cover the ear (e.g. race helmets) are a safety hazard if they prevent you from hearing the guide's instructions.

Can I use my own transceiver, probe, and shovel? **TRANSCIVERS:** Yes, however you are required to be trained with and wear a GCH transceiver since we and your ski companions are assured that they are properly maintained and easy to use. You may use your own transceiver in the event of a search if you are most comfortable with it, but it must remain in your pocket and turned off until such time.

PROBE AND SHOVEL: Yes, providing you have a low-profile backpack that you can comfortably wear while sitting in the helicopter. Removing or leaving your pack in the helicopter is not an option.

Can I bring my own Air Bag? Yes, the use of airbags are permitted, as long as they fit the following criteria:

1. The airbag should be a 2011 or later production year model
2. The airbag should have a trigger handle that can be stowed away in a zippered pocket in the shoulder strap
3. The airbag must be small in size with 15 litres being the maximum size allowed.

According to transport regulations the pack (the cartridge) cannot be allowed in the main compartment of the helicopter under any circumstances and therefore must be transported in the ski basket on the outside of the helicopter.

Can I Rent An Air Bag? If you feel you would like to use an Air Bag, Mountain Sports Distribution will have several Snowpulse Prorider 15L packs available to rent at our lodge. Please inform us before you join us that you would like a bag.

Can I Bring my iPod or personal music player?

While you are more than welcome to have your music in your room, we cannot allow it out in the field. For your safety and the safety of others in your group, you must be able to hear the guide at all times and react to external stimuli.

Can I connect with the outside world at Heather Mountain Lodge?

Yes! Hi-tech communications enable you to slip in and out of the real world so you can enjoy the remoteness of the lodge. We have free wireless Internet, cell phone (\$1 per minute) and satellite TV.

What do you carry in your Store? Arc'teryx, Powder PipeLine and Smith are just some of the quality brands of technical and outdoor clothing and gear that we carry in our store. We have selected a group of technical Arc'teryx pieces that are perfectly designed for heli-skiing. We also carry custom boot and board bags, Kicking Horse Coffee, and many souvenirs.

What additional charges might there be? See The Most Complete Heli-Skiing Package (page 5).

What is your average snowfall? See The Statistics (page 13).

At what altitude do you ski? See The Statistics (page 13).

How fit should I be? Can I ski for a Week?

Fitness is often more important than ability. The more fit you are, the more fun you will have and the less likely you are going to encounter an injury. One guest told us that his conditioning made a huge difference in how much fun he had. If you are joining us for a week you might find it reassuring to know that it is common to feel slightly tired at the end of your third day of heli-skiing. As you take off for the second

half of the week, your technique excels, your muscles acclimatize and your heli-skiing typically is lifted to the level which can only be acquired by committing to a week's dedication to powder turns.

When is the best time to come? See The Statistics (page 13).

How are the groups set up? See Skiing and Snowboarding (page 13).

What Does an Unlimited Vertical day look like?

Can I ski as late as I want? See The Most Complete Heli-Skiing Package (page 5).

Do I have to ski all day? No. The helicopter refuels mid-day. This is your opportunity to go back to the Lodge. Please advise your guide in advance if you wish to ski a partial day.

What activities are there for 'down-days'?

Actually, we are not very good at this because we don't have to be. On average we have 2 days a year that we do not ski. (In 2009 and 2010 we only experienced 2 half down days and in 2008, we did not have any!). Our on-site heli-pads, powerful helicopters, small groups, and fantastic treed lodge runs offer the magic formula for accessibility. We do have snow-shoeing trails and we are half-way between Kicking Horse and Revelstoke Mountain Resorts, yet we almost never ski them as the potential to go heli-skiing is high. Honestly though, we haven't had more than two down days in the past three years, so we haven't given skiing elsewhere much thought! If an operation offers snowcat back-up, you know they have down days!

Does GCH offer any discounts for organizing a group?

Yes. If you are to organize a group of 12 or more skiers you will receive a 10% discount or one free space. In addition, individuals can receive a discount for the following winter if they deposit before the end of their current stay! Also ask for information on Great Canadian Heli-Skiing Season Passes for individuals and groups.



Suggested Packing List

With a warm heli-lift you tend to overheat and battle sweating and fogging up. Helmets can increase your heat retention and wind can increase the need for insulation. Therefore, we emphasize the layering concept.

Below are some suggested layering systems:

-8° Celsius or warmer

Gore-tex Shell (non-insulated), Light micro-fleece pull over, Silk Weight long underwear. Thin hat and cuffed powder gloves.

-8° to -16° Celsius

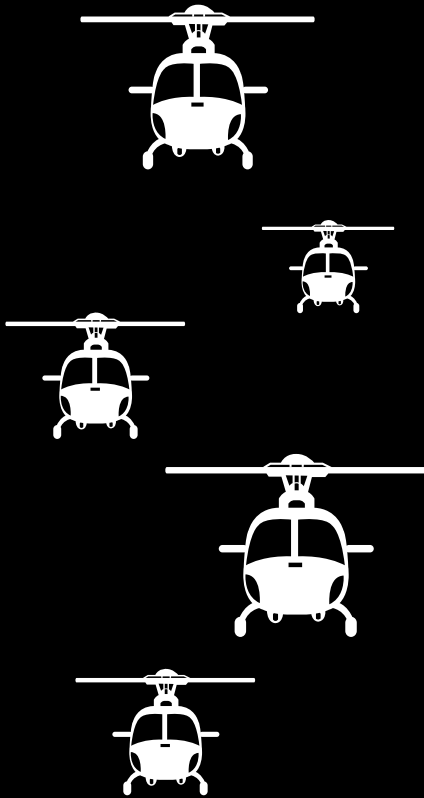
Gore-tex Shell (non-insulated), Light micro-fleece pull over, medium weight long underwear. Thin hat, thin neck warmer and cuffed powder gloves. Lunch time vest ideal.

-16° or colder

Gore-tex Shell. Medium weight fleece or soft shell jacket. Medium weight long underwear. Thicker hat, neck warmer/gator, and cuffed powder Mitts and glove liners. Down vest for lunch time stop for layering over jacket if cooling down.

Packing Check List:

- ❑ 1 pair of well-fitting ski/snowboard boots (ideally not brand new). Do yourself a favour; bring them on the plane with you!
- ❑ Ski goggles (high quality with an anti-fog lens, a low light lens option is useful) If you are a prescription wearer, consider custom goggles with inserts.
- ❑ Waterproof or water resistant outerwear shell, Gore-tex being the most common. (Sized to allow layers underneath).
- ❑ 2 pairs of ski gloves or mitts with powder cuffs.
- ❑ 1 pair of glove/mitten liners; these are ideal for extra warmth and suitable during companion rescue briefing and at lunchtime
- ❑ 2 hats; 1 for colder days and 1 for warmer days
- ❑ 2 Synthetic or wool long underwear (tops and bottoms), 1 silk weight and 1 medium weight; no cotton!
- ❑ Ski socks (2-3 pairs) make sure they do not create too much pressure in boots.
- ❑ Light micro fleece jacket or pullover (ideal for layering)
- ❑ Medium weight fleece or soft shell jacket (ideal for layering)
- ❑ Fleece, Soft-shell or down vest or jacket (ideal for lunchtime or cold days)
- ❑ Sunscreen and Lip balm (small tube), Sunglasses, Camera, Swim Suit and Robe
- ❑ Casual clothes to wear around the Lodge



**GREAT CANADIAN
HELI-SKIING**

Between Golden & Revelstoke British Columbia

info@canadianheli-skiing.com

www.canadianheli-skiing.com

1.866.424.4354 | 250.344.2326